



2019 FERRETTI 920

FOR SALE

SPECIFICATION

Builder

Ferretti Yachts

Built

2019

Length

28.48 m

Beam

6.78 m

Draft

2.2 m

Guests

8 Guests in 4 Cabins

Cruising Speed

22 knots

Hull

Fiberglass(GRP)

Engines

2X MTU 12V 2000 M96L



TANAGER

GRANDEUR AND BEAUTY

This Ferretti 920 is perfectly kept by fulltime captain and is now moored in Hong Kong. She has a relatively low engine hours and is ready to set sail anytime. With a low-key luxurious profile, she is perfect for those who want privacy yet want to have a grand fittings onboard.





EXTERIOR LIVING

TANAGER

MAGNIFICENT

The outdoor areas of the Ferretti Yachts 920 feature luxurious relaxation spaces with ample furnishings. The bow includes the largest sun pad and dinette ever for a yacht of its size, offering adjustable sofas and coffee tables that can be shaded by curtains. The stern boasts a Submersible Hatch for easy access to a spacious beach club and a tender garage, accommodating tenders up to 4 meters. The cockpit can be configured with either a separate sofa or a chaise longue, suitable for dining or sunbathing. The flybridge provides panoramic views with flexible furniture arrangements and options for the hardtop, allowing light and air while offering various shading solutions.



EXTERIOR LIVING
AFT DECK

TANAGER



EXTERIOR LIVING
BOW LOUNGE

TANAGER



EXTERIOR LIVING
SUN DECK

TANAGER



EXTERIOR LIVING
FLYBRIDGE

TANAGER



EXTERIOR LIVING
FLYBRIDGE

TANAGER



INTERIOR LIVING

TANAGER

WELCOMING

The interiors rival the stunning versions in higher category models. The main deck divides up the space, bathing it in natural light. The on-board architecture and décor develop the fascinating leitmotif already enjoyed on the successful Ferretti Yachts 850, while also benefiting from more available space and the use of luxurious materials. It has a warm, welcoming atmosphere with the rooms conveying an original elegance. Structural paneling typical of residential architecture, panoramic windows and veneer finishes with textures that accentuate the depth of the spaces are combined with the expert use of leathers, turning the Ferretti Yachts 920 into a floating Penthouse. The captivating ceiling back-lighting system completes the lounge's contemporary appeal.



INTERIOR LIVING
SALON

TANAGER



INTERIOR LIVING
DINING

TANAGER



INTERIOR LIVING
SALON

TANAGER



CABIN ARRANGEMENT

TANAGER

METROPOLITAN

The wide-body master suite perfectly conveys this metropolitan style, in keeping with the latest furnishing trends. The bed is supported by a dark recessed base, as if it were “floating”, and is surrounded by low furniture along the bulwarks, leaving space for the large windows. There is a vanity desk on the starboard side, while the full-beam bathroom is located forward on a slightly lower level. A walk-in closet completes the suite. The central area of the deck is designed to control the circulation flows on board. There is a lobby to the starboard side with a storage area, day toilet and stairs down to the lower deck. There is a large galley on the port side which leads up to the helm station, or to the first technical and system monitoring area if you continue forward, after which there are stairs leading down to the crew quarters.



CABIN ARRANGEMENT
MASTER CABIN

TANAGER



CABIN ARRANGEMENT
VIP CABIN

TANAGER



CABIN ARRANGEMENT
GUEST CABIN

TANAGER



CABIN ARRANGEMENT
GUEST CABIN



CABIN ARRANGEMENT
MASTER EN SUITE

TANAGER



TECHNICAL AREA
GANGWAY

TANAGER

TOPIC

The pilothouse is an exclusively technical area with a “futuristic” design. Here, the captain can manage the entire yacht thanks to a large control station with multiple touchscreen display that fully integrates the on-board monitoring system and navigation instruments, along with a next-gen steering system. Great attention is paid to the crew: in addition to the large dinette with laundry area, the captain can enjoy a private en-suite cabin, while the crew can relax in two double cabins with a bathroom fitted with a separate shower.



TECHNICAL AREAS
PILOT HOUSE

TANAGER



TECHNICAL AREAS
FLYBRIDGE HELM

TANAGER



TECHNICAL AREAS
GARAGE

TANAGER

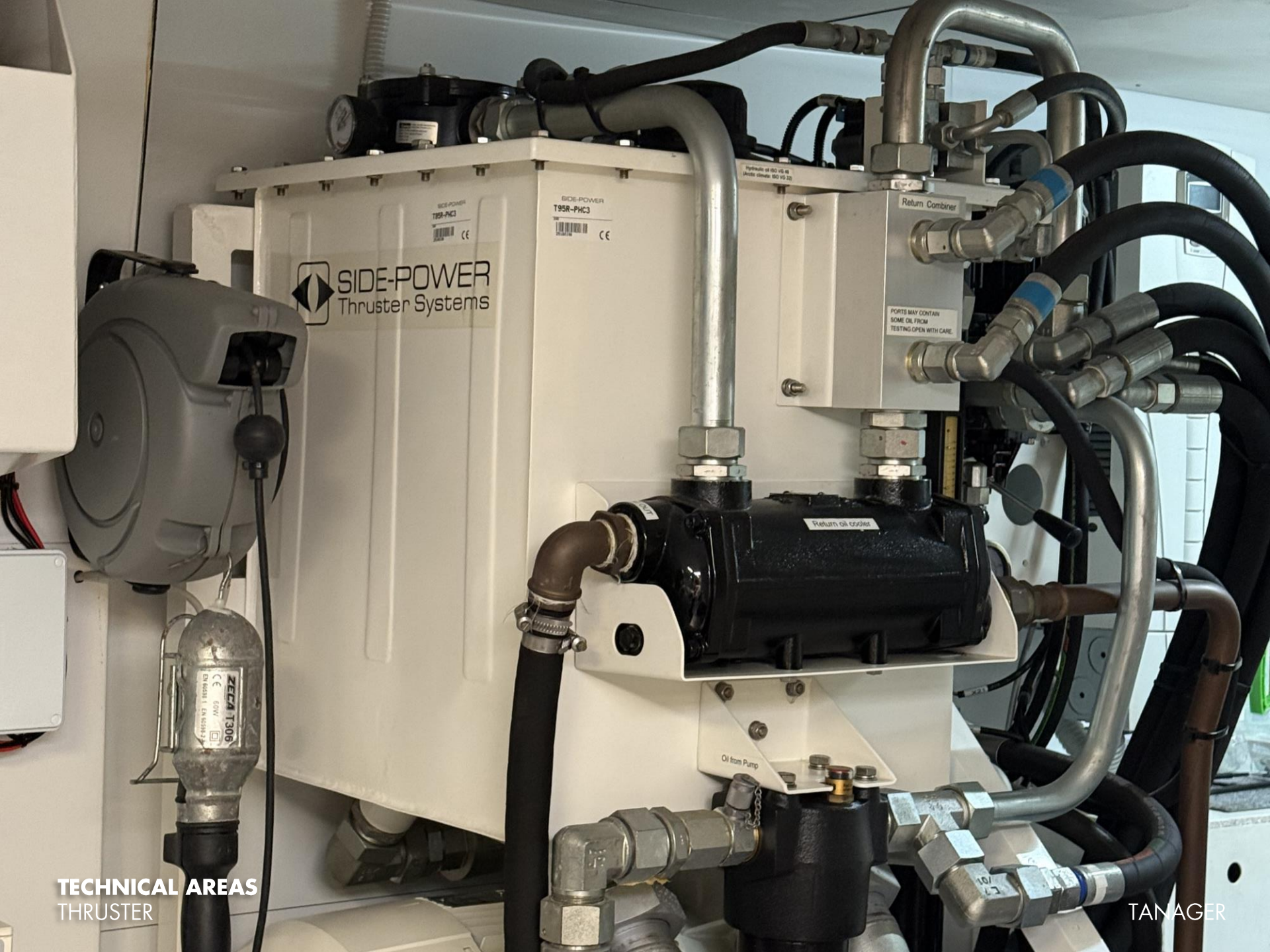


TECHNICAL AREAS
DINETTE AND LAUNDRY

TANAGER



TECHNICAL AREAS
WATER MAKER



TECHNICAL AREAS
THRUSTER

TANAGER

Cummins Onan Generator

DC CIRCUIT BREAKERS

OFF ON

EMERGENCY
STOP

START
PREHEAT



STOP
PRIME



MDKDS/T/U

SERVICE DATA

Fuel filter	0149-2804
Oil filter	0122-0906
Sea water pump impeller	0541-1316
Zinc	0130-4434
Alternator belt	0511-0237

CAPACITIES

Oil with filter	10.4 ltr (11 qt)
Engine coolant (50/50)	13.7 ltr (14.5 qt)

OPERATION

(Read and follow Operator's Manual
instructions and precautions.)

START
1. Push START button.
(Engine will start.)
2. For generator (bank),
it is not

STOP
1. Touch STOP

ZINC 7月 24日

TECHNICAL AREAS
GENERATOR

TANAGER

mtu

CE 0098

MTU Friedrichshafen GmbH
Maybachplatz 1
88045 Friedrichshafen

66.60 MMN 425

EMISSION CONTROL INFORMATION

THIS MARINE ENGINE COMPLIES WITH U.S. EPA REGULATIONS FOR 2018. INSTALLING THIS RECREATIONAL ENGINE IN A COMMERCIAL VESSEL OR USING THE VESSEL FOR COMMERCIAL PURPOSES MAY VIOLATE FEDERAL LAW SUBJECT TO CIVIL PENALTY (40 CFR 16.2.601). ULTRA LOW SULFUR DIESEL FUEL ONLY.

ENGINE FAMILY: JMD0136.7KNK
ENGINE MODEL: 12V2000-M96L
ENGINE CATEGORY: 1
MAX. ENGINE POWER: 1432 KW
USEFUL LIFE: 4000 H
UNIT: 544100793

MFG. DATE: 06/2018
DISP.: 26.8 L
POWER DENSITY: >35 KW/L
APPLICATION: E5
EMISSION CONTROL SYSTEM: ECM TC FIP IF

mtu

MTU America Inc.

66.24 MMN 420

IMO TIER II LABEL

MARINE ENGINE EMISSION CONTROL INFORMATION.
THIS ENGINE COMPLIES WITH THE MARPOL 73/78 ANNEX VI REGULATION 13 IMO TIER II NOX EMISSION LIMITS FOR MARINE ENGINES. THIS ENGINE IS CERTIFIED TO OPERATE ON DIESEL FUEL.

RATED POWER: 1920 HP (1432 KW) AT 2450 RPM


UNIT: 544100793

MTU Friedrichshafen GmbH

mtu

66.22 MMN 420

WARNING:



BREATHING DIESEL ENGINE EXHAUST EXPOSES YOU TO CHEMICALS KNOWN TO THE STATE OF CALIFORNIA TO CAUSE CANCER OR BIRTH DEFECTS OR OTHER REPRODUCTIVE HARM.

- ALWAYS START AND OPERATE THE ENGINE IN A WELL-VENTILATED AREA.
- IF IN AN ENCLOSED AREA, VENT THE EXHAUST TO THE OUTSIDE.
- DO NOT MODIFY OR TAMPER WITH THE EXHAUST SYSTEM.
- DO NOT IDLE THE ENGINE EXCEPT AS NECESSARY.

FOR MORE INFORMATION GO TO: WWW.PREWARNING03.CA.GOV/DIESEL

MTU America Inc.

66.12 MMN 420

2019 FERRETTI 920 TANAGER

Yacht basic info

Type	Flybridge Motor Yacht		
Flag	/		
Dimension	LOA	28.48m	93'6"
	LWL		
	Beam	6.78m	22'2"
	Draft	2.2m	7'2"
Gross Tonnage	150T		
Year built	2019		
Asking price			
Location	Hong Kong		

Specifications

Propulsion systems / 2X MTU 12V 2000 M96L 1948HP (P: 497H S: 498H)

Passengers / 8 guests in 4 cabins

Maximum speed / 26kn

Cruising Speed / 22kn

Capacities / Fuel: 9000L
/ Water: 1320L

Generator / 2x Cummins Onan 27kw (P:1298H S:1295H)

Crew 5

LAYOUT





TANAGER



IT-FER9208A919